

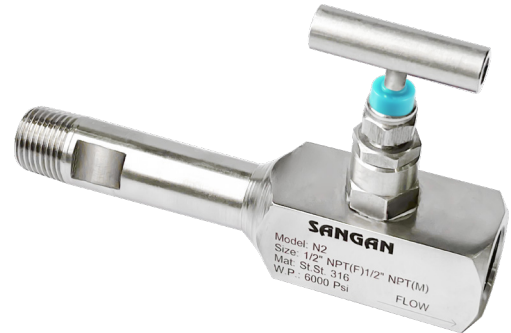
## FEATURES

- Non-rotating spindle tip
- Bonnet locking pins
- Safety back seating T-bar
- Flow coefficient  $C_v = 0.23$

## APPLICATIONS

- Can be used for shutting off impulse lines or for isolation of pressure instruments
- Specifically designed to mount on flush rings and flush flanges

## Extended Instrument Valve



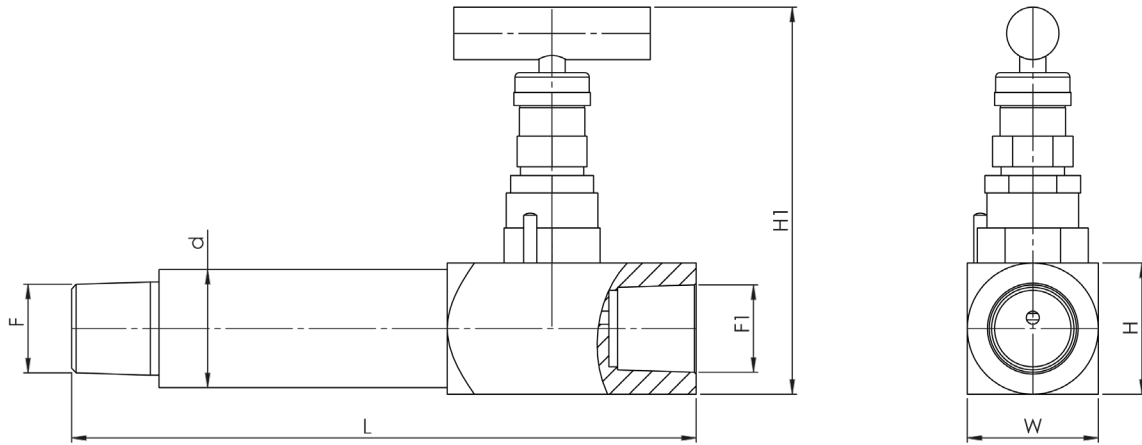
### STANDARD SPECIFICATIONS

Maximum pressure	: 413 bar (6000 psi) at 38°C
Maximum temperature	: 240 °C
Process connection	: 1/2" NPT (M)
Instrument connection	: 1/2" NPT (F)

### MATERIAL SPECIFICATIONS

Body	: AISI 316L
Bonnet	: AISI 316L
Spindle Gasket	: Virgin PTFE

## DIMENSIONAL DRAWING



F	F1	L	H	H1 min	H1 max	W	d
¼" NPT (F)	¼" NPT (F)	143	30	95	98	30	Ø18
¼" NPT (M)	¼" NPT (F)	143	30	95	98	30	Ø18
¼" NPT (M)	¼" NPT (M)	143	30	95	98	30	Ø18
¼" BSP (F)	¼" BSP (F)	143	30	95	98	30	Ø20
¼" BSP (M)	¼" BSP (F)	143	30	95	98	30	Ø18
¼" BSP (M)	¼" BSP (M)	143	30	95	98	30	Ø18
3/8" NPT (F)	3/8" NPT (F)	143	30	95	98	30	Ø24
3/8" NPT (M)	3/8" NPT (F)	143	30	95	98	30	Ø24
3/8" NPT (M)	3/8" NPT (M)	143	30	95	98	30	Ø24
3/8" BSP (F)	3/8" BSP (F)	143	30	95	98	30	Ø23
3/8" BSP (M)	3/8" BSP (F)	143	30	95	98	30	Ø22
3/8" BSP (M)	3/8" BSP (M)	143	30	95	98	30	Ø22
½" NPT (F)	½" NPT (F)	143	30	95	98	30	Ø28
½" NPT (M)	½" NPT (F)	143	30	95	98	30	Ø24
½" NPT (M)	½" NPT (M)	143	30	95	98	30	Ø24
½" BSP (F)	½" BSP (F)	143	30	95	98	30	Ø28
½" BSP (M)	½" BSP (F)	143	30	95	98	30	Ø26
½" BSP (M)	½" BSP (M)	143	30	95	98	30	Ø26
Butt weld	½" NPT (F)	147	30	95	98	30	Ø28
Butt weld	½" BSP (F)	147	30	95	98	30	Ø28
Butt weld	½" NPT (F)	147	30	95	98	30	Ø28
Butt weld	½" BSP (F)	147	30	95	98	30	Ø28
Swivel	½" NPT (F)	143	30	95	98	30	Ø29
Swivel	½" BSP (F)	143	30	95	98	30	Ø29
Socket weld	½" NPT (F)	157	30	95	98	30	Ø30
Socket weld	½" BSP (F)	157	30	95	98	30	Ø30
Tube fitting	½" NPT (F)	143	30	95	98	30	Ø18
Tube fitting	½" BSP (F)	143	30	95	98	30	Ø18

All dimensions are in mm.

## ORDERING CODES

### 1. STEM MATERIAL

<b>MG</b>	AISI 316L	
<b>MI</b>	AISI 321	<b>MI</b>
<b>MM</b>	Monel	
<b>MO</b>	Hastelloy C-276	
<b>MD</b>	Super Duplex	
<b>MR</b>	Inconel 625	
<b>MV</b>	Titanium	

### 2. TIP MATERIAL

<b>MG</b>	AISI 316L	<b>MG</b>
<b>MI</b>	AISI 321	
<b>MM</b>	Monel	
<b>MO</b>	Hastelloy C-276	
<b>MD</b>	Super Duplex	
<b>MR</b>	Inconel 625	
<b>MV</b>	Titanium	

### 3. BODY MATERIAL

<b>MG</b>	AISI 316L	<b>MG</b>
<b>MI</b>	AISI 321	
<b>MM</b>	Monel	
<b>MO</b>	Hastelloy C-276	
<b>MD</b>	Super Duplex	
<b>MR</b>	Inconel 625	
<b>MV</b>	Titanium	

### 4. SPINDLE GASKET

<b>ME</b>	PTFE	
<b>MA</b>	Grafoil	<b>MA</b>

### 5. INSTRUMENT CONNECTION

<b>12N</b>	1/4" NPT (M)	
<b>13N</b>	3/8" NPT (M)	
<b>14N</b>	1/2" NPT (M)	
<b>12B</b>	1/4" BSP (M)	
<b>13B</b>	3/8" BSP (M)	
<b>14B</b>	1/2" BSP (M)	
<b>02N</b>	1/4" NPT (F)	
<b>03N</b>	3/8" NPT (F)	
<b>04N</b>	1/2" NPT (F)	<b>04N</b>
<b>02B</b>	1/4" BSP (F)	
<b>03B</b>	3/8" BSP (F)	
<b>04B</b>	1/2" BSP (F)	
<b>BW</b>	Butt weld	
<b>SW</b>	Swivel	
<b>SO</b>	Socket weld	
<b>FI</b>	Tube fitting	

### 6. PROCESS CONNECTION

<b>12N</b>	1/4" NPT (M)	
<b>13N</b>	3/8" NPT (M)	
<b>14N</b>	1/2" NPT (M)	
<b>12B</b>	1/4" BSP (M)	
<b>13B</b>	3/8" BSP (M)	
<b>14B</b>	1/2" BSP (M)	
<b>02N</b>	1/4" NPT (F)	
<b>03N</b>	3/8" NPT (F)	
<b>04N</b>	1/2" NPT (F)	<b>04N</b>
<b>02B</b>	1/4" BSP (F)	
<b>03B</b>	3/8" BSP (F)	
<b>04B</b>	1/2" BSP (F)	
<b>BW</b>	Butt weld	
<b>SW</b>	Swivel	
<b>SO</b>	Socket weld	
<b>FI</b>	Tube fitting	

### 7. OTHER OPTIONS

<b>TO</b>	Use for Oxygen service	
<b>TP</b>	Max working pressure 10.000 psi	<b>TP</b>

**Ordering Example : NE-MI-MG-MG-MA-04N-04N-TP**

### NOTES

1. Other connections are available, please contact factory for details.
2. Valve stem dust covers shall be identified with color codes according to their function as ; Blue = ISOLATE