

FEATURES

- Flush fitment in pipeline
- Laser welded flush diaphragm
- Optional flushing ring
- Optional exotic materials

APPLICATIONS

- Slurry applications
- Transmitter refurbishment

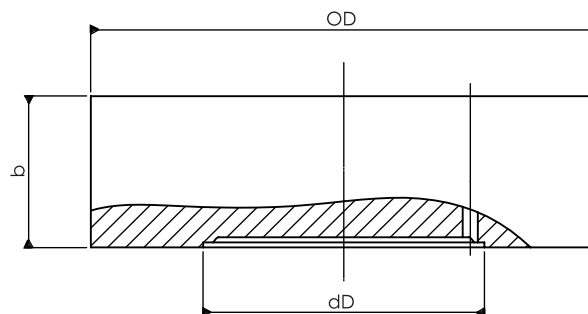
Pan-cake



STANDARD SPECIFICATIONS

Range type	: -1...250 bar
Wafer material	: AISI 316 SS
Diaphragm	: AISI 316 SS
Instrument connection	: ¼" NPT (M)
Sealing fluid	: Silicon
Process connection	: RF size as per ANSI B16.5 / EN 1092-1 / JIS B 2210
Assembly	: Remote
Capillary	: AISI 304 SS
Armour	: AISI 304 SS
Remote mounting length	: 2000 mm

DIMENSIONAL DRAWING



Size	Rating	OD	dD	b
1"	cl. 150-2500	50.8	23.5	24.0
1.5"	cl. 150-600	73.0	44.0	24.0
	cl. 900-2500	73.0	32.0	24.0
2"	cl. 150-600	92.1	57.0	24.0
	cl. 900-2500	92.1	44.0	24.0
3"	cl. 150-2500	127.0	81.0	24.0
4"	cl. 150-2500	157.2	81.0	24.0

All dimensions are in mm.

ORDERING CODES

1. RANGE TYPE

S42	-1...250 bar	S42
------------	--------------	------------

2. CHAMBER MATERIAL

LF	AISI 316 SS	LF
LG	AISI 316L SS	
LM	Monel	
LO	Hastelloy C-276	

3. DIAPHRAGM MATERIAL

DG	AISI 316L SS	DG
DB	AISI 316 SS	
DM	Monel	
DO	Hastelloy C-276	
DV	Titanium	
DW	Tantalum	
DX	Nickel	

4. INSTRUMENT CONNECTION

12B	1/4" BSP (M)	
12N	1/4" NPT (M)	12N
14B	1/2" BSP (M)	
14N	1/2" NPT (M)	

5. SEALING FLUID

OA	Silicon	OL
-----------	---------	-----------

6. PROCESS CONNECTION

T91	1 1/2" RF flange connection	
T92	2" RF flange connection	T92
T93	3" RF flange connection	
T94	4" RF flange connection	
T95	5" RF flange connection	

7. PROTECTION ON WETTED PARTS

PC	PTFE coating on diaphragm or wetted parts	PC
PB	PTFE protection from diaphragm	

8. ASSEMBLY

B9	Remote (capillary)	B9
-----------	--------------------	-----------

9. CAPILLARY

OU	AISI 304 SS	OU
OV	AISI 316 SS	

10. ARMOUR

OX	AISI 304 SS	OX
OY	AISI 316 SS	
OZ	PVC (Ambient max. 60°C)	

11. REMOTE MOUNTING LENGTH

XXXX	2000 mm up to 6000 mm	2000
-------------	-----------------------	-------------

12. OTHER OPTIONS

TC	Material test certificate	TC
TN	NACE standards	

Ordering Example : BRC-S42-LF-DG-12N-OL-T92-PC-B9-OU-OX-2000-TC

.....

.....

.....

.....

.....

.....

.....

.....

.....

.....