

diaphragm differential pressure gauge

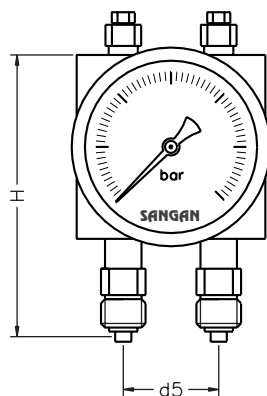
model	ø 100mm	ø 160mm
PG 13 - 362/A with bottom connection		bottom
standard features		
case and bayonet	stainless steel	
double welded diaphragm system	AISI 316L (NACE)	
window	glass	
range in (m)bar or equivalent	0/100 mbar 0/25 bar	
thread bsp - npt - bspt	1/2"	
max. process temperature	120 °C	
accuracy at 20 °C	1,6 %	
pointer	adjustable with slotted bush	
scale	covers 270 ° of arc	
static pressure	200 bar	



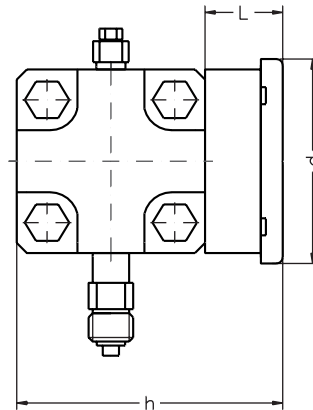
PG 13 - 362

options	ø 100mm	ø 160mm
surface mounting with plate	PG 13 - 362/C	PG 13 - 362/C
pipe mounting with clamp fixing	PG 13 - 362/C	PG 13 - 362/C
front flange for panel mounting	PG 13 - 362/E	PG 13 - 362/E
case with bezel AISI 316	a	a
painted case	a	a
silicone filling	a	a
micro adjustable pointer	a	a
safety glass window	a	a
max. dragpointer in plexiglas window	a	a
3-way stainless steel manifold	a	a
5-way stainless steel manifold	a	a
non standard thread	a	a
static pressure 400 bar	a	a
accuracy 1% at 20 °C	a	a
calibration certificate	a	a

a = available as option

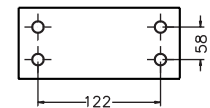


type A

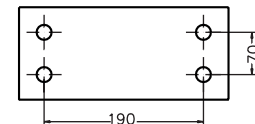


type A

mounting plate



clamp fixing plate



measurements	ø 100mm	ø 160mm
d in mm	118	166
d5 in mm	54	54
h in mm	150	150
L in mm	50	50
H in mm	112	112
weight in kg	6,4	7,2

dimensions are approximate and can be changed without prior notice

Tel:+98 21 77529876, Fax:+98 2177607250

P.O.BOX: 15655-177. Tehran.Iran

www.sangansanat.com