

bourdon tube differential pressure gauge

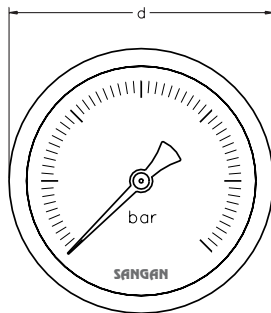
model	∅ 100mm
PG13 - 358/A with bottom connection	bottom
standard features	
case and bayonet bezel	stainless steel
double C-tube system	stainless steel
window	glass
range in bar or equivalent	0/0,4 0/25
thread bsp - npt - bspt female	1/4"
max. process temperature	120 °C
accuracy at 20 °C	1,6 %
pointer	adjustable with slotted bush
static pressure	2 x full scale apart from pressure in one or both connections
indication	one pointer (differential value)



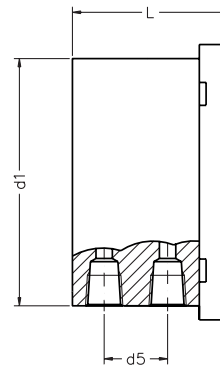
PG13 - 358

options	∅100mm
back flange for wall mounting	PG13 - 358/C
front flange for panel mounting	PG13 - 358/E
silicon filling	a
micro adjustable pointer	a
safety glass window	a
non standard thread	a
static pressure 3 x fsd	a
monel internals	a

a = available as option



type A



type A

measurements	∅ 100mm
d in mm	118
d5 in mm	23
L in mm	64
d1 in mm	103
weight in kg	1,05

dimensions are approximate and can be changed without prior notice

Tel:+98 21 77529876, Fax:+98 2177607250

P.O.BOX: 15655-177. Tehran.Iran

www.sangansanat.com