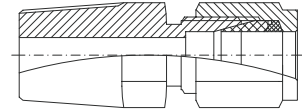


standard 'double ferrule' tube fittings

straight fittings

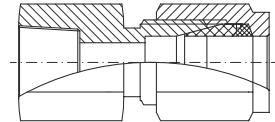
CMC male connector

available for tube 1/8" to 1" imperial and 4 mm to 25 mm metric, connections from 1/8" to 1" npt / bsp / bspt, standard material AISI316, fittings properly packed with the exposed threads protected.



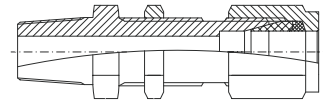
CFC female connector

available for tube 1/8" to 1" imperial and 4 mm to 25 mm metric, connections from 1/8" to 1" npt / bsp / bspt, standard material AISI316, fittings properly packed with the exposed threads protected.



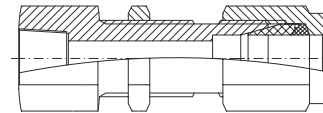
CBMC bulkhead male connector

available for tube 1/8" to 1/2" imperial and 4 mm to 12 mm metric, connections from 1/8" to 1/2" npt / bsp / bspt, standard material AISI316, fittings properly packed with the exposed threads protected.



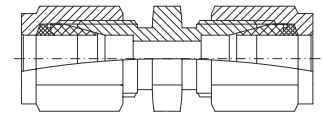
CBFC bulkhead female connector

available for tube 1/8" to 1/2" imperial and 4 mm to 12 mm metric, connections from 1/8" to 1/2" npt / bsp / bspt, standard material AISI316, fittings properly packed with the exposed threads protected.



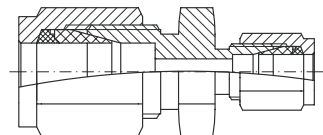
CUC tubing union

available for tube 1/8" to 1" imperial and 4 mm to 25 mm metric, standard material AISI316, fittings properly packed with the exposed threads protected.



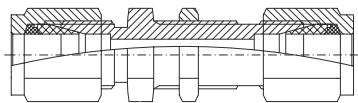
CRU reducing union

available for tube 1/8" to 1" imperial and 4 mm to 25 mm metric, standard material AISI316, fittings properly packed with the exposed threads protected.



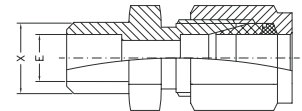
CBU bulkhead union

available for tube 1/8" to 1/2" imperial and 4 mm to 12 mm metric, standard material AISI316, fittings properly packed with the exposed threads protected.



CSWC socket weld connector

available for tube 1/8" to 1" imperial and 4 mm to 25 mm metric, standard material AISI316, fittings properly packed with the exposed threads protected.



CBWC but weld connector

available for tube 1/8" to 1" imperial and 4 mm to 25 mm metric, standard material AISI316, fittings properly packed with the exposed threads protected.

