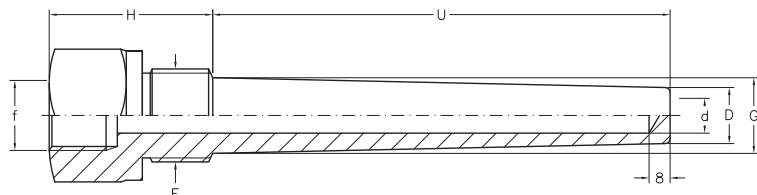
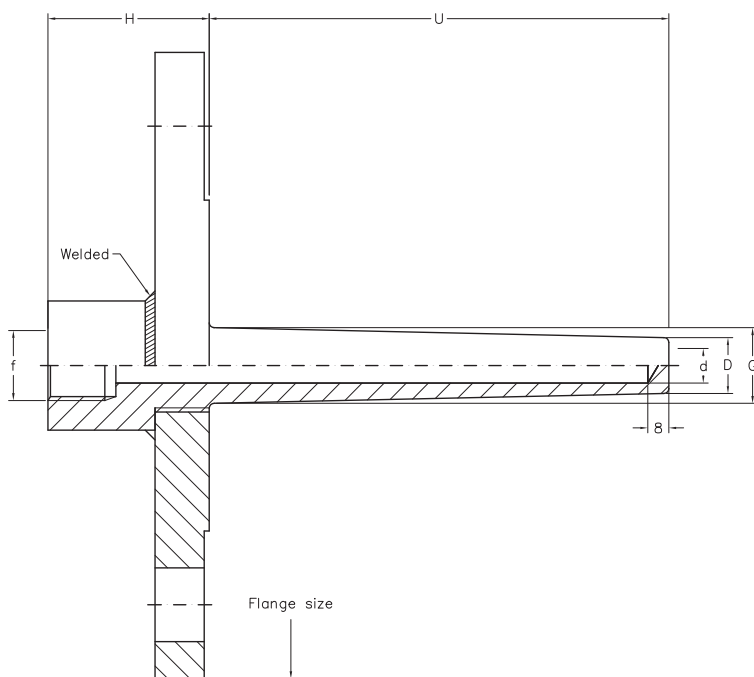


## W51 / W101

barstock thermowell, stainless steel, tapered shank



maximum nominal pressure 400 bar				in-/outside diameter (dxD) mm			
				7x16	9x18	10x19	12x21
model	f (bsp or npt)	F	H	G	G	G	G
W51	1/2"	1/2" bsp-m / npt-m	46	18	-	-	-
	1/2"	3/4" bsp-m / npt-m	46	23	23	23	23
	1/2"	1" bsp-m / npt-m	51	29	29	29	29



nominal pressure acc. to flange rating (max. 400 bar)				in-/outside diameter (dxD) mm			
				7x16	9x18	10x19	12x21
model	f (bsp or npt)	flange size	nominal pressure	H	G	G	G
W101	1/2"	acc. DIN	150 - 300#	46	18	-	-
		acc. ANSI	ND 10 - 64				
		acc. JIS	600 - 2500#	51	29	29	29
			ND 100 - 400				