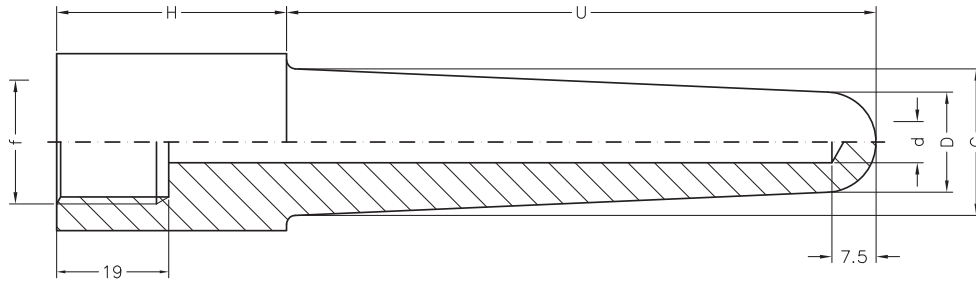


# W60 / W50

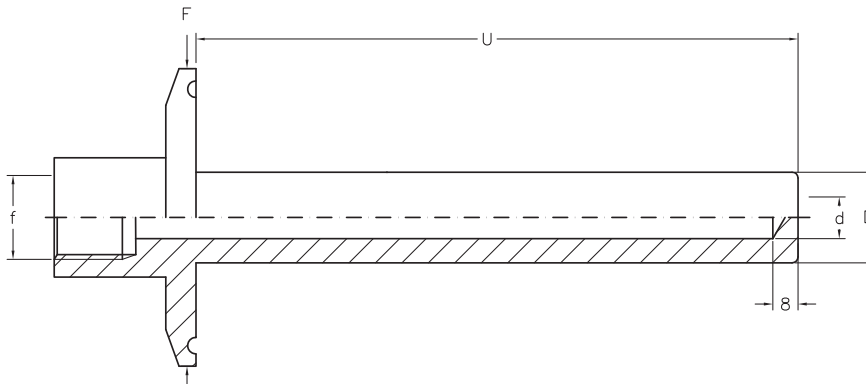
*barstock thermowell, stainless steel, tapered shank, weld-in*



dimensions for model W60 for welding DIN 43 763

pocket length					
U + H	H	G	D	d	f
140	39	25	15	7	1/2" bsp/npt

*barstock thermowell, stainless steel, straight shank, tri-clamp*



model	f (bsp or npt)	flange size	d
W50	1/2"	1" tri-clamp	18
		1 1/2" tri-clamp	18
		2" tri-clamp	18
		3" tri-clamp	18