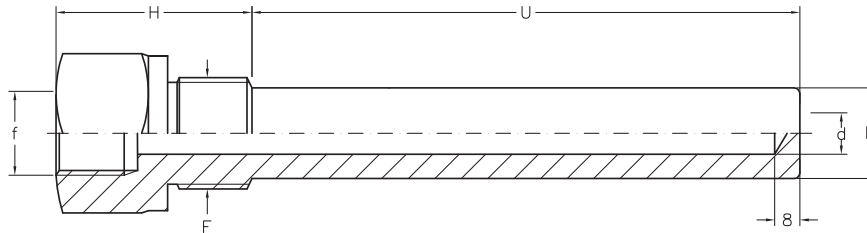
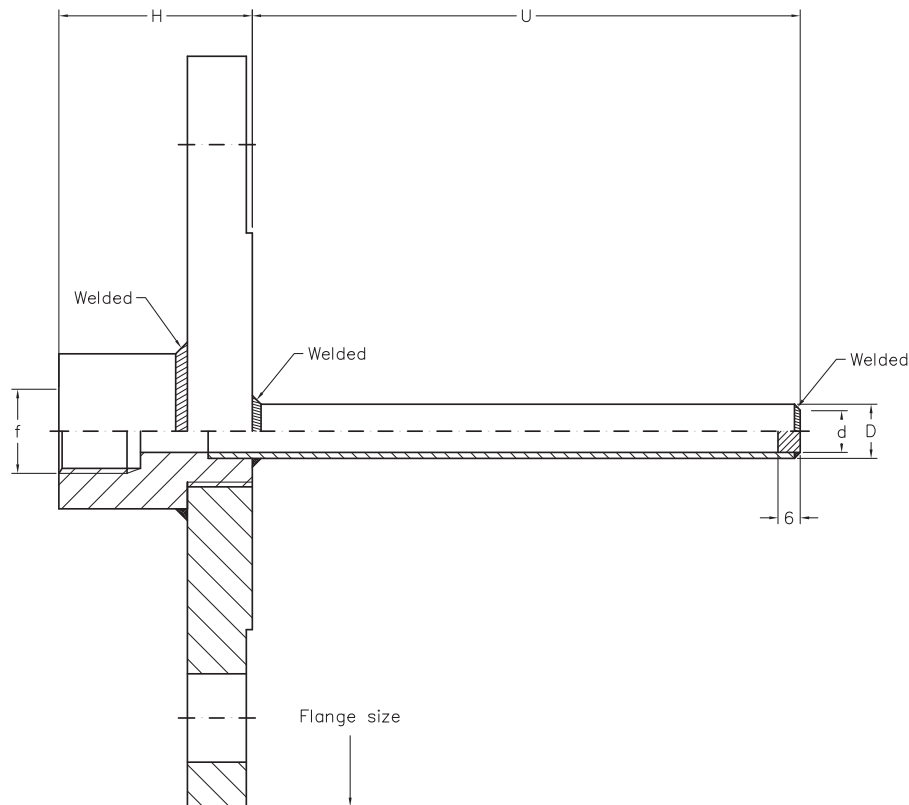


W11 / W81

built-up thermowell, stainless steel, straight shank



maximum nominal pressure 25 bar				pipe size (mm)			
model	f (bsp or npt)	F	H	d=7 D	d=9 D	d=10 D	d=12 D
W11	1/2"	1/2" bsp-m / npt-m	46	10	12	13,5	15
	1/2"	3/4" bsp-m / npt-m	46	10	12	13,5	15
	1/2"	1" bsp-m / npt-m	51	10	12	13,5	15



nominal pressure acc. to flange rating (max. 25 bar)				pipe size (mm)				
model	f (bsp or npt)	flange size	flange rating	H	d=7 D	d=9 D	d=10 D	d=12 D
W81	1/2"	acc. DIN	150 - 300# ND 2,5 - 6	46	10	12	13,5	15
		acc. ANSI						
		acc. JIS						