

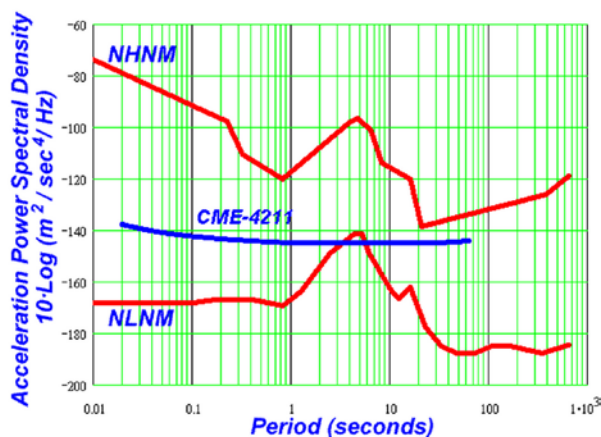
BOREHOLE BROADBAND SEISMOMETER CME-4211-BH15



The **CME-4211-BH15** is a 3-component inexpensive broadband seismometer designed for use in pits or post-holes down to 15 meters depth both dry and flooded.

The sensor is equipped with a hermetic connector and a lifting ring for going in hole and subsequent surfacing. The device is very rugged, does not require any adjustment or mass-centering.

Configuration	Triaxial, orthogonal – Vertical, North, East
Sensitivity	2000 V/(m/s) or customized
Maximum input signal	5 mm/sec
Frequency bandwidth	0,033 (30 sec) – 50 Hz
<i>Limiting values</i>	0,0167 (60 sec) – 100 Hz
Maximum output swing	±15V, differential mode
Output impedance	1000 Ohms
Dynamic range at 1 Hz	113 dB
Integral noise in the band	
0,033 (30 sec) – 50 Hz	76 nm/sec (152 μV)
0,1 (10 sec) – 20 Hz	28,4 nm/sec (57.8 μV)
Self-noise	See plot below
Cross-axis sensitivity	-60 dB
Temperature range	Standard -12°C - +55°C (10.4°F - 131°F) Low-temperature -40°C - +55°C (-40°F - 131°F)
Supply voltage	Standard 10,5 .. 16 V DC, 12 V DC nominal
Supply current	25mA
Settling time till correct readings after power on	10 - 30 minutes, depending on the low frequency cut-off
Mass Lock , Mass Centering	None required
Self-calibration	Not available
Connector type, cable	Russian PC-10TB type, 10 pin with additional hermetic sealing, geophysical cable of required length with hermetical connector counterpart
Case accessories	Lifting ring, 3 feet for on-surface testing
Weight sensor / 15 meters cable	2.5 kg (5,51 lbs) / 1.5 kg (3,31 lbs)
Dimensions including ring, diameter x height	105 x 250 mm (4.13” x 9.84”)



Source: Center for Molecular Electronics, Moscow Institute of Physics and Technology, 2012

Some of presented features and parameters apply to specific versions of a seismometer. Specifications are subject to change without notice.